

SCT209



- temperature range $-40 \div 400^{\circ}\text{C}$ (depending on the cable used)
- mounting by the hose-dip directly onto pipelines
- brass sheath with a specially contoured shape

The thermocouples SCT209 are designed for assembling directly onto pipelines or other cylindrical elements. Hose-dip allows mounting sensors on a pipeline system. SCT209 consists of a thermometric resistor, protection tube made out of brass, hose-dip and connection cable.

Application areas

- temperature measurement of pipelines and other cylindrical elements,
- general industrial services

TECHNICAL DATA

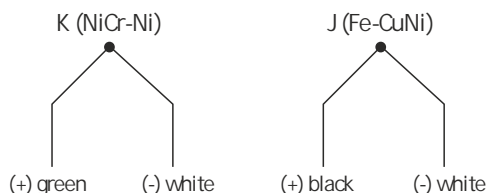
Sensing element	J, K, N, R, S, B thermocouple or other (single, double)
Measuring range	$-40 \div 400^{\circ}\text{C}$ (depending on the cable used)
Class	1 or 2
Sheath	material: brass
Cable	type according to the table, standard length 1500 mm or other according to order

CONNECTION CABLES

Diagram	Insulation design	Temperature range	Code
	Double fiberglass - stainless steel	$-40 \div 400^{\circ}\text{C}$	WS
	PVC	$-10^{\circ}\text{C} \div 105^{\circ}\text{C}$	PVC
	Teflon - stainless steel - teflon	260°C max.	TOT
	Teflon - stainless steel	260°C max.	TO
	Silicon - stainless steel - silicon	180°C max.	SOS
	Silicon - silicon	$-30^{\circ}\text{C} \div 250^{\circ}\text{C}$	SS
	Teflon - teflon	$-40^{\circ}\text{C} \div 260^{\circ}\text{C}$	TT



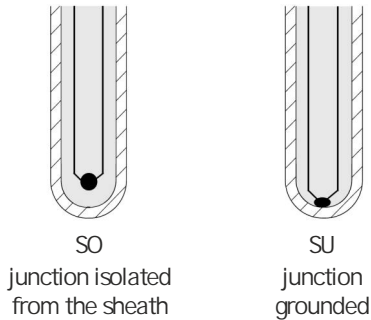
ELECTRICAL CONNECTION



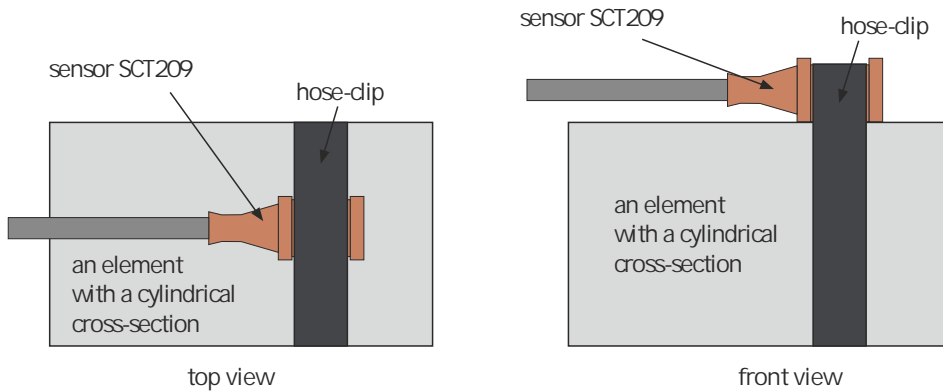
THERMOCOUPLES TOLERANCE ACC. TO PN-EN 60584

Thermocouple	Class 1		Class 2	
	Temperature range	Tolerance	Temperature range	Tolerance
J (Fe-CuNi)	-40 ÷ 750°C	± 1,5°C	-40 ÷ 750°C	± 2,5°C
K (NiCr-Ni)	-40 ÷ 1000°C	± 0,0040°C x t	-40 ÷ 1200°C	± 0,0075°C x t
N (NiCr-Si-NiSi)	-40 ÷ 1000°C		-40 ÷ 1200°C	
B (PtRh30-PtRh6)	-	-	600 ÷ 1700°C	± 0.0025°C x t
R (PtRh13-Pt)	0 ÷ 1100°C	± 1.0°C	0 ÷ 600°C	± 1.5°C
S (PtRh10-Pt)	1100 ÷ 1600°C	± [1+0.003(t-1100)]°C	600 ÷ 1600°C	± 0.0025°C x t

TYPES OF MEASURING HOT JUNCTION



MOUNTING



ORDERING

SCT209-X-X-X-X-X-X-X

- temperature sensor:
 - 1 : single
 - 2 : double
- sensing element:
 - J
 - K
 - N
 - other, please specify
- insulation types of connection cable:
 - PVC : PVC / PVC (105°C max.)
 - TT : teflon / teflon (260°C max.)
 - SS : silicon / silicon (250°C max.)
 - WS : double fiberglass / stainless steel (400°C max.)
- measuring element diameter:
 - 22 mm
 - other, please specify
- accuracy class:
 - class 1
 - class 2
- junction type:
 - SO : junction isolated from the sheath
 - SU : junction grounded
- connecting cable length (AL):
 - 1500 : 1,5 linear meter
 - other, please specify [mm]

Ordering example:
 SCT209-1-K-TS-1500-SU-2-22
 Single TC temperature sensor, K thermocouple, 2 tolerance class, teflon insulation, hose-clip match to Ø22 mm, connection cable length 1500mm, junction grounded.

