

CABLE PROBES



PPO-612-00-X-X
Cable probe Ø18, L=90mm, w/o cable, housing SS 316L, filter FPO-P350

Ordering:

PPO-612-00-X-X
 — measurement of:
 2: temperature
 3: temperature & humidity
 — connector type:
 2: connector, operating temp. -30 ÷ +80°C



PPO-612-XX-X-X
Cable probe Ø18, L=90mm, housing SS 316L, filter FPO-P350

Ordering:

PPO-612-XX-X-X
 PPO-621-XX-X-X
 PPO-622-XX-X-X
 — measurement of:
 2: temperature
 3: temperature & humidity
 — connector & cable type:
 1: gland, PUR covered, operating temp. -30 ÷ +80°C
 3: gland, TPE covered, operating temp. -30 ÷ +120°C
 — cable length:
 05 (0,5m), 10 (1m), 15 (1,5m),
 20 (2m), 25 (2,5m), 30 (3m)



PPO-621-XX-X-X
Cable probe Ø12, L=200mm, housing SS 316L, filter from SS mesh 25 µm



PPO-622-XX-X-X
Cable probe Ø12, L=300mm, housing SS 316L, filter from SS mesh 25 µm

FILTERS



FPO-P350
Teflon filter (PTFE) with increased resistance against splashing water, non-absorbent surface, does not rust, operating temperature -30 ÷ +120°C

MOUNTING ACCESSORIES

HPQ-FB12
Flat circular flange for Ø12 probes, brass nickel plated



HPQ-CGS12
Thread bracket for Ø12 probes, brass nickel plated, M20x1,5



HPQ-W1218
Wall mounting bracket for Ø12 and Ø18 probes, SS 316L



HPQ-CGS18
Thread bracket for Ø18 probes, brass nickel plated, M25x1,5



CONNECTION ACCESSORIES



CPQ-00
M12 connector, 4-pin, w/o cable
for PPQ-612 probes,
operating temp. -30 ÷ +80°C



CPX-30
M12 connector, 4-pin, cable 3 m, for PPQ-612 probes

Ordering:

CPX-30

operating temp.:

Q : standard: -30 ÷ +80°C, cable TPU covered

T : expanded: -30 ÷ +120°C, cable TPE covered

ADDITIONAL ACCESSORIES



The SIR-25 infraRed remote control may be used as external programming keyboard for all SIMEX devices equipped with IR receivers and remote programming functions. Pressing of any local IR controller key, causes transmission of it's code to the device. The remote control features a five-button keyboard, including the F/ /RESET function button dedicated to the operation of the devices in the following group: counters, flowmeters, and tachometers. Functions of particular keys depend on devices features.

Power supply voltage: 3V DC - 1 lithium battery CR2032 type
Operation range: from 0,5 to 5 m (depend on programmed device features)



SRS-U4
Module is designed to connect a USB host to slave devices equipped with RS-485 interface. The PC with special software can be used as a host. The SRS-U4 unit guarantees full galvanic isolation between USB and RS-485 circuits. The converter can work with any devices equipped with RS-485 interface and contains integrated circuit which supports USB 1.1 and USB 2.0 standards. The main purpose is connection of PC host computer with industrial data acquisition and visualisation systems based on RS-485 interface. The SRS-U4 can be also manufactured with DIN mounting adaptor.



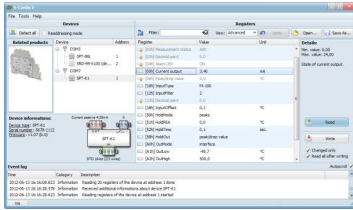
SCL-QM
Case lock - access is safeguarded by means of insert lock



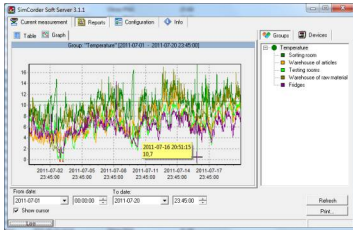
LSQkit
Lid supports (2 pcs)



SOFTWARE



S-Config 2 is used for the simultaneous detection of devices in multiple Modbus RTU networks and allows user to change the configuration of most of them. For each detected device a list of its registers, which the user can modify, is displayed and also additional informations about device parameters (type, address in the network, etc.). S-Config software can be downloaded from SIMEX website at www.simex.pl



SimCorder Soft is a visualisation application created to facilitate work with advanced networks of the SIMEX devices, for acquisition, visualisation, reporting, archiving, exporting and printing of measurement data from all network devices. You can download measurements from the devices automatically or on demand. There is a possibility of immediate notification about emergency states via SMS or e-mail, which will often allow to quickly resolve an arising problem while avoiding long and expensive stoppages. You can view the measurement data, emergency states and configuration via the internet at every time.

CALIBRATION CERTIFICATE

Standard calibration certificate, in 1 point, issued by Simex laboratory, free of charge	
SCCI-T	1 temperature channel (1 point: 25°C)
SCCI-TH	1 temperature channel (1 point) + 1 relative humidity channel (2 points: 20%/70% RH@ 25°C)

